

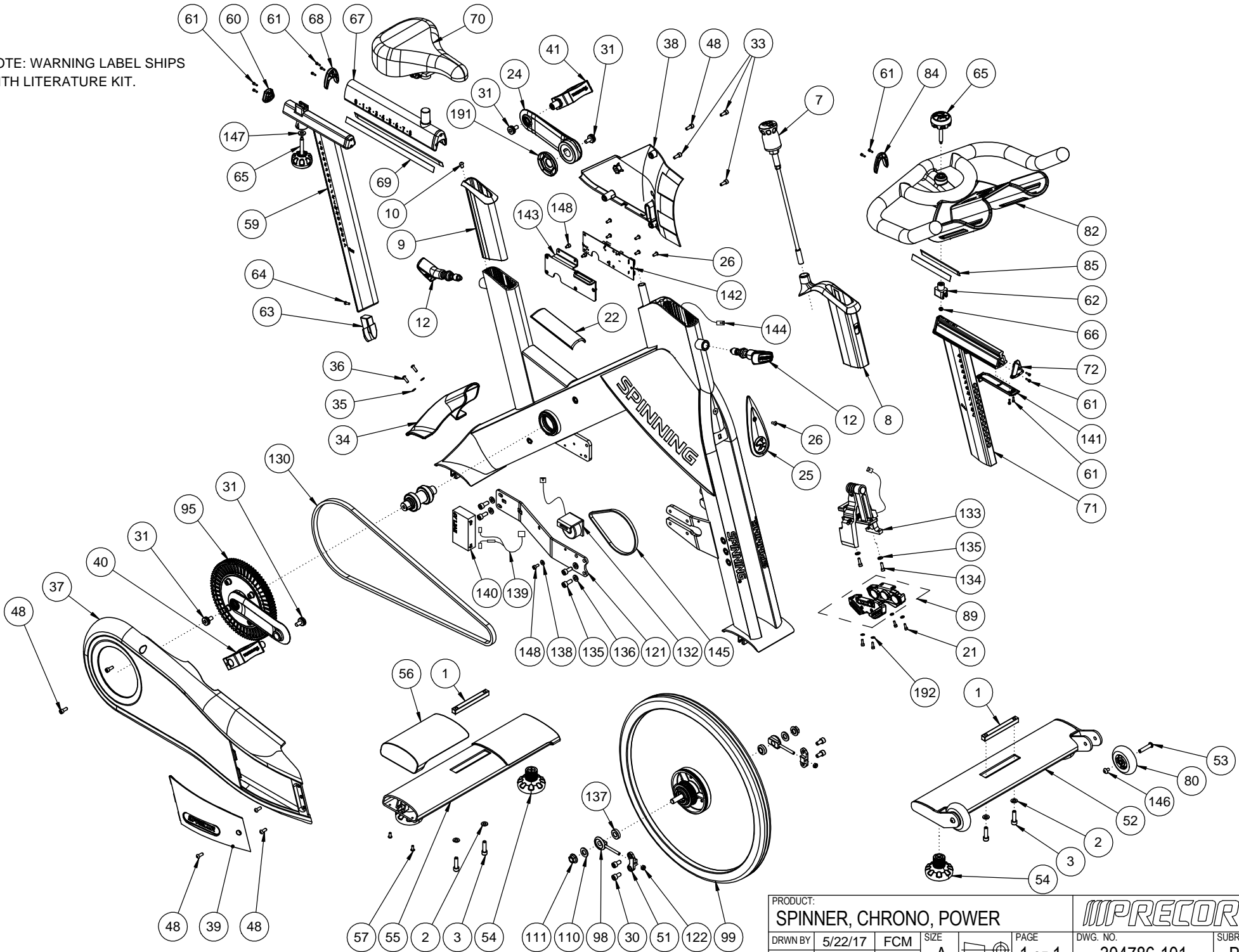
D

C

B

A

NOTE: WARNING LABEL SHIPS WITH LITERATURE KIT.



PRODUCT:				SPINNER, CHRONO, POWER		PRECOR®	
DRWN BY	5/22/17	FCM	SIZE	PAGE	DWG. NO.	SUBREV	
CS			A	1 OF 1	304786-101	B	

DRAWING TEMPLATE REV. C

<u>Bubble Numbers</u>	<u>Part Number</u>	<u>Item Description</u>
1	PPP000000RX3TZ7000	BAR, STABILIZER MOUNT
2	PPP000000RX3R4J000	WASHER, M8
3	PPP000000RX3V0Q000	BOLT, M8X30
7	PPP000000RX3V6V000	ASSY, BRAKE ROD
8	PPP000000RX3TYJ000	SLEEVE, HANDLEBAR
9	PPP000000RX3TYL000	SLEEVE, SEAT POST
10	PPP000000RX3FYL000	SCREW, BUTTON HEAD, M6
12	PPP000000RX3V74000	ASSY, SELECTOR PIN
21	PPP000000RX3R4X000	SHCS, M4X0.7
22	PPP000000RX3V72000	ASSY, COVER, STEP THRU
24	PPP000000RX3TZG000	CRANK, LEFT
25	PPP000000RX3V73000	ASSY, BADGE
26	PPP000000RX0JZT000	SCREW, M5
30	PPP000000RX0JUJ000	NUT, NYLOCK, M6
30	PPP000000RX3EJS000	SHCS, M8 X 16, E-COAT
31	PPP000000RX3TZL000	BOLT, CRANK
33	PPP000000RX3NV0000	SHCS, M6X1.0X20
34	PPP000000RX3U0P000	COVER, STRETCH PAD
35	PPP000000RX0J4D000	WASHER, STRETCH PAD
36	PPP000000RX0JZU000	SCREW, STRETCH PAD
37	PPP000000RX3U0Q000	COVER, DRIVE SIDE
38	PPP000000RX3U0R000	COVER, NON DRIVE SIDE
39	PPP000000RX3V75000	ASSY, COVER, ACCESS PANEL
40	PPP000000RX3TZK000	PEDAL, RIGHT
41	PPP000000RX3TZJ000	PEDAL, LEFT
48	PPP000000RX3VAV000	SCREW, BUTTON HEAD, M6X1.0X16, E-COAT
51	PPP000000RX3TZZ000	FIXED ADJUST, FLYWHEEL
52	PPP000000RX3TYT000	STABILIZER, FRONT, WELDMENT
53	PPP000000RX3TZ1000	AXEL, WHEEL
54	PPP000000RX3TZ2000	FOOT, ADJUSTABLE
54	PPP000000RX3TZ2000	FOOT, ADJUSTABLE
55	PPP000000RX3TZ4000	STABILIZER, REAR, WELDMENT
56	PPP000000RX3V7C000	ASSY, COVER, REAR STABILIZER
57	PPP000000RX3AD0000	BOLT, M5X0.8
59	PPP000000RX3TY6000	WELDMENT, SEAT POST
60	PPP000000RX3TYA000	ENDCAP, SEAT POST
61	PPP000000RX0JU0000	SHCS, M3X8
62	PPP000000RX3TY5000	BLOCK, FIXED
63	PPP000000RX3TYB000	BUMPER, SEAT POST
64	PPP000000RX1550000	FHMS, M4
65	PPP000000RX3TY2000	KNOB, HANDLEBAR
66	PPP000000RX30YZ000	NUT, NYLOCK, M5X0.8
67	PPP000000RX3TYC000	WELDMENT, SEAT SLIDE
68	PPP000000RX3TYF000	ENDCAP, SEAT SLIDE
69	PPP000000RX3TYG000	GLIDE, SEAT
70	PPP000000RX3TYH000	SEAT
71	PPP000000RX3TXP000	WELDMENT, HANDLEBAR POST
72	PPP000000RX3TXR000	ENDCAP, HB FIXED
80	PPP000000RX3TZ0000	WHEEL
82	PPP000000RX3TXT000	ASSY, HANDLEBAR

84	PPP000000RX3TY0000	ENDCAP, HANDLEBAR
85	PPP000000RX3TY1000	GLIDE, HANDLEBAR
86	PPP000000RX3V2D000	SHCS, M8X1.25
89	PPP000000RX3V6X000	ASSEMBLY, MAGNET SET
89.1	PPP000000058248101	CS KIT, MAGNET GAP FIXTURE
95	PPP000000RX3V79000	ASSEMBLY, DRIVE CRANK
98	PPP000000RX3TZW000	FLYWHEEL ADJUST TUG
99	PPP000000RX3V6U000	ASSY, FLYWHEEL
110	PPP000000RX3U6E000	WASHER, M12X2.5
111	PPP000000RX3U6B000	NUT, FLYWHEEL, M12X1.25
121	PPP000000RX3U0M000	BRACKET, CROSS MEMBER
122	PPP000000RX32RA000	NUT, FLYWHEEL ADJUST
130	PPP000000RX3U6N000	BELT, CONTI 1440
132	PPP000000RX3V76000	ASSEMBLY, GENERATOR
133	PPP000000RX3V6W000	ASSY, BRAKE, POWER
134	PPP000000RX20QC000	SHCS, M5X0.8
135	PPP000000RX3FXR000	WASHER, M5
135	PPP000000RX3SCQ000	SHCS, M6
136	PPP000000RX3SCM000	WASHER, M6
137	PPP000000RX3TZV000	SPACER, AXLE, FLYWHEEL
138	PPP000000RX3LMW000	WASHER, M5
139	PPP000000RX3U24000	CABLE, BATTERY
140	PPP000000RX3U26000	BATTERY
141	PPP000000RX3TXS000	COVER, CABLE
142	PPP000000RX3U27000	LPCA
142.1	PPP000000013289060	ASSY,CBL,USB 2.0, A MALE/MOD,6P6C,PWR,60 INCHES
143	PPP000000RX3U0J000	BRACKET, LPCA
144	PPP000000RX3U23000	CABLE, COMMUNICATION
145	PPP000000RX3U6L000	BELT, GENERATOR
146	PPP000000RX3VFE000	SCREW, BUTTON HEAD, M6 X10
147	PPP000000RX3VFF000	WASHER, SEAT KNOB, POM, 8X18X2.1
148	PPP000000RX3FYN000	SHCS, M5 X 8
148	PPP000000RX3SCP000	SCREW, M5
191	PPP000000RX3ULZ000	COVER, BB
192	PPP000000RX0J66000	FLAT WASHER